



Getting Started Guide - Power Vent

PROFESSIONAL INSTALLATION REQUIRED, ALWAYS READ THE OWNER'S MANUAL

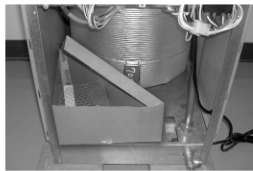
Pre-Installation

Make sure the water and gas supply shut off valve has been closed prior to installing Eternal.

1 Unpack accessories



Remove 2 screws holding the front panel at the bottom, push the panel down and towards yourself to remove.



Take the accessory box out of the front of the unit.



Check contents against the list in the manual to see if anything is missing. Save spare seals for future use.

2 Ready unit for install

a. Vent collar and condensate tube



Place the orange rubber ring on the bottom of the exhaust collar, and align the exhaust collar on top of the aluminum mounting flange.



Secure vent collar with 4 screws to the top panel.

b. T&P Relief valve

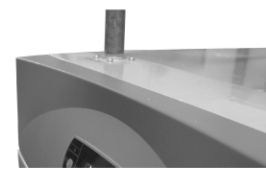


Thread the T&P valve with proper sealant to make a tight seal.



Install the T&P Valve on the side of the unit and tighten with wrench.

c. Connectors



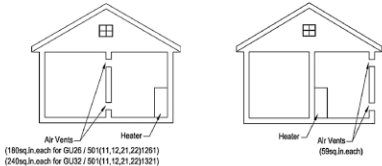
Thread water nipples and gas connector with proper sealant, then install and secure with plumbing wrench. Be SURE to use ONLY brass nipples as water connectors, other types of nipples will cause corrosion.



Make sure the gas connector is 3/4" ID and with gas volume enough for your unit.

3 Install in the right environment

a. Air Supply



Eternal takes combustion air from surrounding. It does not take combustion air directly from outside. Therefore, make sure the area has access to fresh air. If installing in closet make sure louvers are installed to provide air. Check your install space to see if air is supplied from within your home or from outside.

b. Gas supply



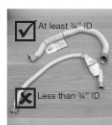
Check to see what size gas pipe your home has from the meter into your home. Eternal requires at least 3/4" gas pipe for optimal performance. Undersized fuel line will diminish performance or cause shut-downs.



Make sure the gas pipe from the meter is sized properly to supply the total BTU load of all gas appliances, ie. furnace+oven+water heater.



Connect the gas supply to the unit. Make sure the gas connection hose you use is the right capacity for Eternal.



Make sure the Internal Diameter (ID) of the Gas Connection Hose is at least 3/4"



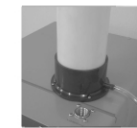
Check the BTU rating on the hose packaging.
GU20 = 145,000
GU26 = 180,000
GU28 = 199,000
GU32 = 236,000

c. Venting

Eternal is power vented and must be vented with 4" Schedule 40 PVC pipe. Termination can be either horizontal or vertical. In general the shorter the total vent length the more economical the install.



Attach 3/8" ID vinyl tubing on the drain spout of the vent collar and direct tubing to a suitable waste drain.



Insert the vent pipe into the collar until the fitting is tight.



Connect the cold water supply on the right and hot water outlet on the left. Do not reverse the water connections as the unit will not work. Make sure the pipes are tightened to avoid leaks.



Optional outdoor venting kit available.

To order call: 1-866-946-1096

Minimum recommended air supply to water heater		
Water heater capacity	Outside air area	Inside air area
Max. 236,000 BTU	16 sq.in.	64 sq.in.
Max. 199,000 BTU	14 sq.in.	54 sq.in.
Max. 180,000 BTU	12 sq.in.	48 sq.in.
Max. 145,000 BTU	10 sq.in.	40 sq.in.

Reference this chart and make sure properly sized air vents are provided for your install.

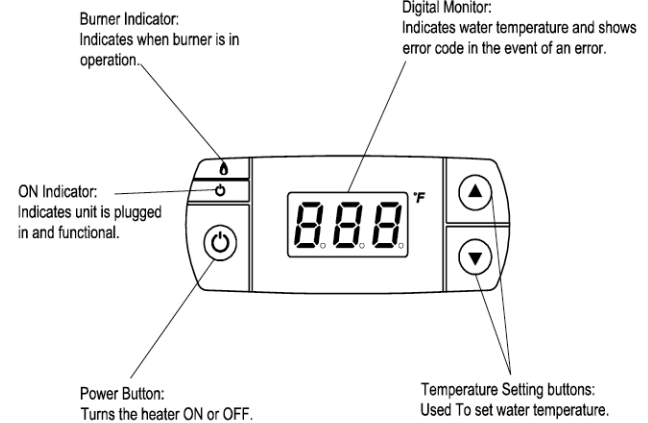
Recommendation:

Two 6.5 x 6.5 louver vents for GU20
Two 7 x 7 louver vents for GU26
Two 7.5 x 7.5 louver vents for GU28
Two 8 x 8 louver vents for GU32

Use the above chart as a quick reference. To precisely determine what size gas line you need from your gas meter to where the water heater will be installed, look up Gas Supply Piping Charts on page 25 in your Operator's Manual.

Recommend Gas Pipe Size (Diameter, for Natural Gas)	
Distance from gas meter	Pipe size (inches)
0 ft. to 20 ft.	3/4 inch
20 ft. to 60 ft.	1 inch
60 ft. to 100 ft.	1 - 1/4 inch

Control Panel



4 Initial operation

- Open water supply shut off valve and fill the unit fully with water
- Open nearby faucet to purge the line of air, close faucet when purged
- Open gas shut off valve
- Plug in the unit and press the power button to turn on
- Wait for the initialization cycle to complete, this will take a few minutes

- Once the unit is on standby mode, you can freely change the temperature setting by pressing either the up or down button
- That's it! Enjoy endless hot water. Don't forget to register your Eternal!