

Gas Condensing Technology
VITODENS® 200, WB2B

VIESSMANN®
climate of innovation®





The Vitodens 200 is ENERGY STAR® qualified and EcoLogo certified. By choosing the Vitodens 200, you are helping to promote cleaner air and a healthier environment.

Intelligent combustion control

The Vitodens 200 is ready for the future thanks to its intelligent Lambda Pro combustion management system, which automatically adapts combustion to changing gas qualities and operating conditions. Even if the gas composition fluctuates or the gas type is changed, Lambda Pro quickly adjusts the boiler for maximum efficiency at the new conditions. This unique function becomes increasingly important as gas supplies vary in quality and heating value.

With your new Vitodens 200 operating at the highest efficiency at all times, your monthly heating bills will be significantly reduced without compromising your warmth, comfort and reliability.

Efficient by design

At the core of the high-efficiency Vitodens 200 is the Viessmann stainless steel Inox-Radial heat exchanger and Matrix cylinder burner. Together, they allow the greatest amount of

heat extraction to be achieved with minimal loss (see diagram for more information).

Comfort control

The powerful Viessmann Vitotronic control provides user-friendly management of the entire heating system and ensures economical performance and maximum comfort at all times. The outdoor reset function automatically adapts the boiler operating temperature to the changing outdoor temperature. This reduces fuel consumption without compromising your warmth and comfort. Plus, with system control for multiple zone space and DHW heating, the Vitotronic offers even greater heating flexibility without additional external controls.

Your environmental choice

The Vitodens 200 is your efficient and environmentally-friendly choice for all applications. The low-emission Matrix cylinder burner guarantees clean, low-NOx combustion, while Lambda Pro ensures the highest efficiency at all times. With the Vitodens 200 you can actively contribute to protecting the environment, while protecting your wallet too.

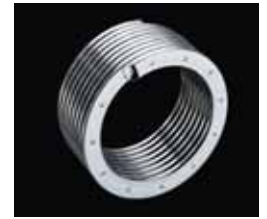
Strength in numbers

As many as eight Vitodens 200 gas-fired condensing boilers can be combined in a single prefabricated cascade system*, with inputs up to 2960 MBH. A cascade system fires boilers as required to meet fluctuating heating demands; it maintains maximum efficiency at all times by precisely matching the load.

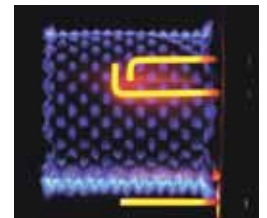
A cascade system can also prevent interruption of heating plant operation, with multiple boilers available as back-up.



- 1 Inox-Radial heat exchanger
- 2 Modulating Matrix cylinder burner
- 3 Vitotronic on-board system control



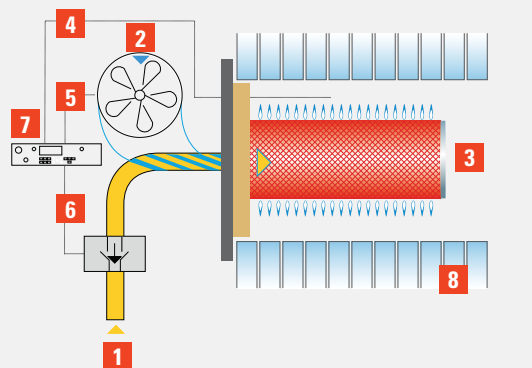
316Ti stainless steel Inox-Radial heat exchanger



Low-emission fully-modulating cylinder burner

What is Lambda Pro?

By continuously monitoring the flame quality of the Matrix cylinder burner, the Lambda Pro combustion management system can ensure maximum efficiency by automatically adjusting the gas and combustion air ratio. Without any manual adjustments or conversions, the Vitodens 200 always performs at optimal efficiency.



- | | |
|--------------------------|----------------------|
| 1 Gas supply | 5 Air signal |
| 2 Combustion air | 6 Gas signal |
| 3 Matrix cylinder burner | 7 Vitotronic control |
| 4 Flame signal | 8 Heat exchanger |

Specifications

- Viessmann made SA240 316 Ti stainless steel Inox-Radial heat exchanger constructed to CSA B51 and ASME Section IV
- Viessmann made stainless steel Matrix cylinder burner
- 7 models from 31 to 370 MBH (single-boiler installation)
- A.F.U.E. ratings up to 91.9% (models WB2B 19-80 only)
- Premium boiler suitable for all applications
- Suitable for altitude levels of up to 10,000 ft. / 3,000 m

For technical data, see back page.

Benefits at a glance

- Best value with leading technology and the most standard features
- Fast installation and reduced maintenance with Lambda Pro - Industry-first intelligent combustion management system
- Lasting performance with proven Viessmann stainless steel Inox-Radial heat exchanger
- Low-emission combustion with Viessmann stainless steel Matrix cylinder burner for natural gas or propane
- Powerful and user-friendly Viessmann Vitotronic on-board multi-function outdoor reset boiler and system control
- Greater venting flexibility with vent length up to 180 ft. and multiple venting options
- Extremely quiet operation - quieter than most refrigerators
- Lifetime warranty in residential applications

*Third party control required for systems of five to eight boilers.

Viessmann Manufacturing
Company Inc.
Waterloo, ON Canada
1-800-387-7373
www.viessmann.ca

Viessmann Manufacturing
Company (U.S.) Inc.
Warwick, RI U.S.A.
1-800-288-0667
www.viessmann.us

Technical Data



VITODENS 200	WB2B	19	26	35	45	60	80	105
Efficiency	% AFUE	91.9	91.9	91.9	90.3	90.3	90.3	94.5*
Minimum Input	MBH	31	31	31	60	60	104	104
Maximum Input	MBH	67	93	125	160	212	285	370
Weight	lbs	102	102	102	155	155	225	225
Width	in	17.75	17.75	17.75	19	19	19	19
Height	in	33.5	33.5	33.5	33.5	33.5	33.5	33.5
Depth	in	14	14	14	15	15	21	21

*CSA thermal efficiency ANSI Z21.13/CSA 4.9. Information subject to change without notice. Diagram illustrates dimensions for WB2B-105.

